



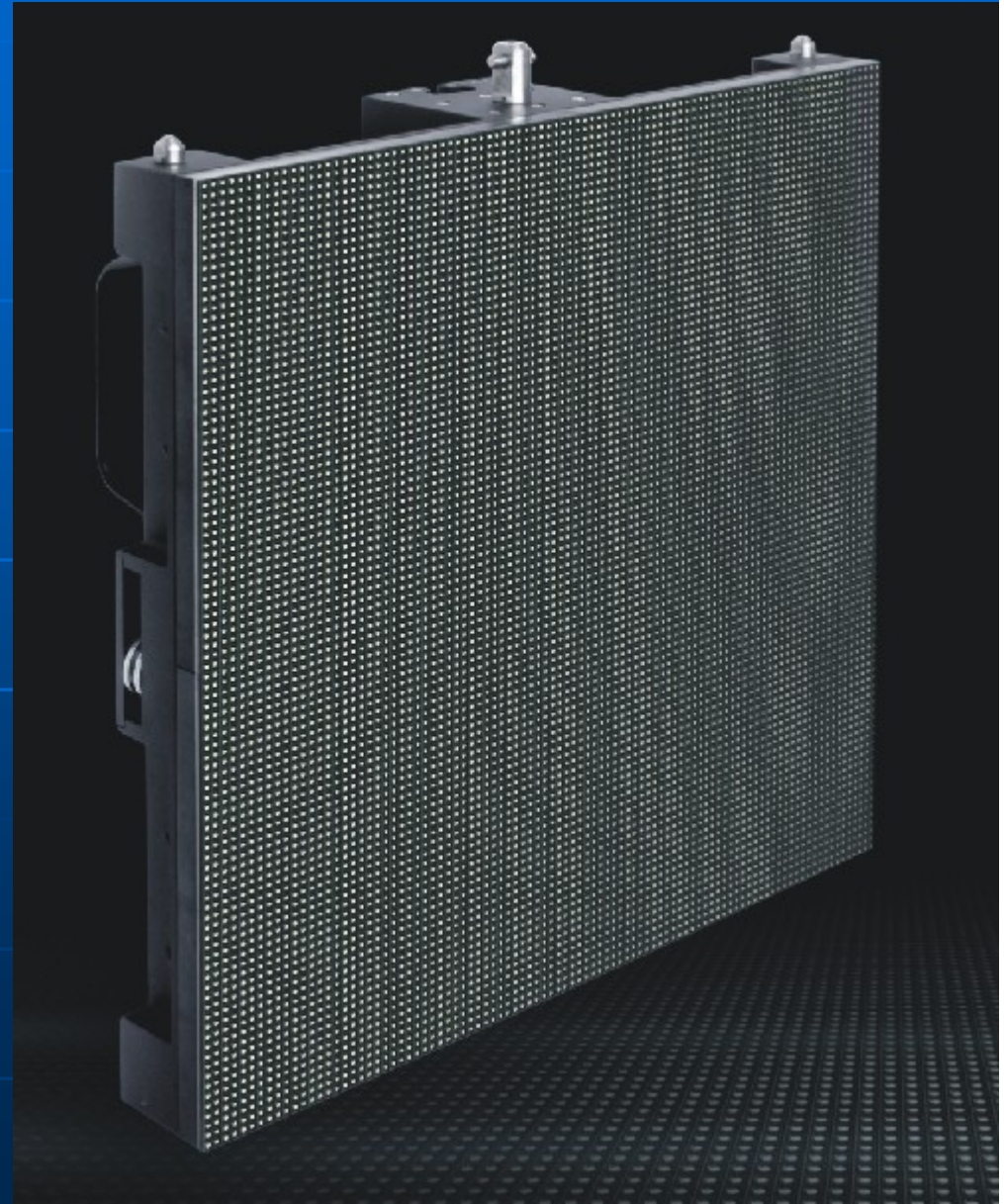
EURO LED

Introduction to Lease LED Display
PH3.8 & PH5.08 & PH6.09 & PH7.62



PH6.09 Lease LED Display

*Quick assembly,
seamless splicing*





- Cabinet body: display module group of die-casting alloy box
- Cabinet Dimension: 488mm * 488mm * 110mm
- Cabinet Weight: 11kg
- Compression molding, distortion resistant, and little abrasion
- Connection: The upper box and lower box are connected in a suspending mode, and the left box and right box are connected through side locks. At the back of the box body, there are four holes for M10 installation screws. The display can be quickly installed in a suspending mode or in a ground bracket.

Cabinet Pictures





Display Pictures

